

One artist's view of the UK Capital

Photographs provide an essential component in the travelling experience.

At the outset, they offer the visual information needed to help determine if and when to visit a particular destination.

And, having done so, photographs provide a stack of memories from that visit.

So photographs, by their nature, offer a pinpoint accurate reflection of a specific shot at a precise moment in time.

Because of this they tend to leave nothing to our imagination.

The artist's approach to a scene

An artist's approach to the scene they purvey is, in contrast, a more personal perception and one that is coloured by both emotion and creative approach.

As a result, the world presented to us through the artist's eye brings with it the freedom for us bestow our own perceptions from what we see.

The portfolio of London scenes by artist Benjamin Hope enables the viewer to create a genuine appreciation of the excitement, bustle and beauty that permeates every aspect of one of the world's great cities.

Ashley Gibbins
Commissioning Editor
AllWays traveller



Round about route from the City to the city streets

By Ashley Gibbins

I remember, as a lad, quizzing my father, a second generation journalist, as to whether I should follow him into the profession.

His advice was emphatic. "If you are destined to be a journalist you will need to write, whatever I say".

For my father, putting pen to paper was just that (or rattling out his words on a trusty manual typewriter).

How times have changed.

And so, after a couple of successful but ultimately unrewarding careers, my need to write could no longer be suppressed and journalism came to the fore.

Benjamin's round about route

The same applied to Benjamin Hope who took an unconventional route to his destined calling as an artist

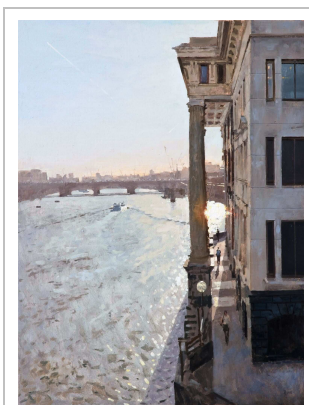
The son of artist Jane Hope, Benjamin grew up surrounded by her creative endeavours and influences.

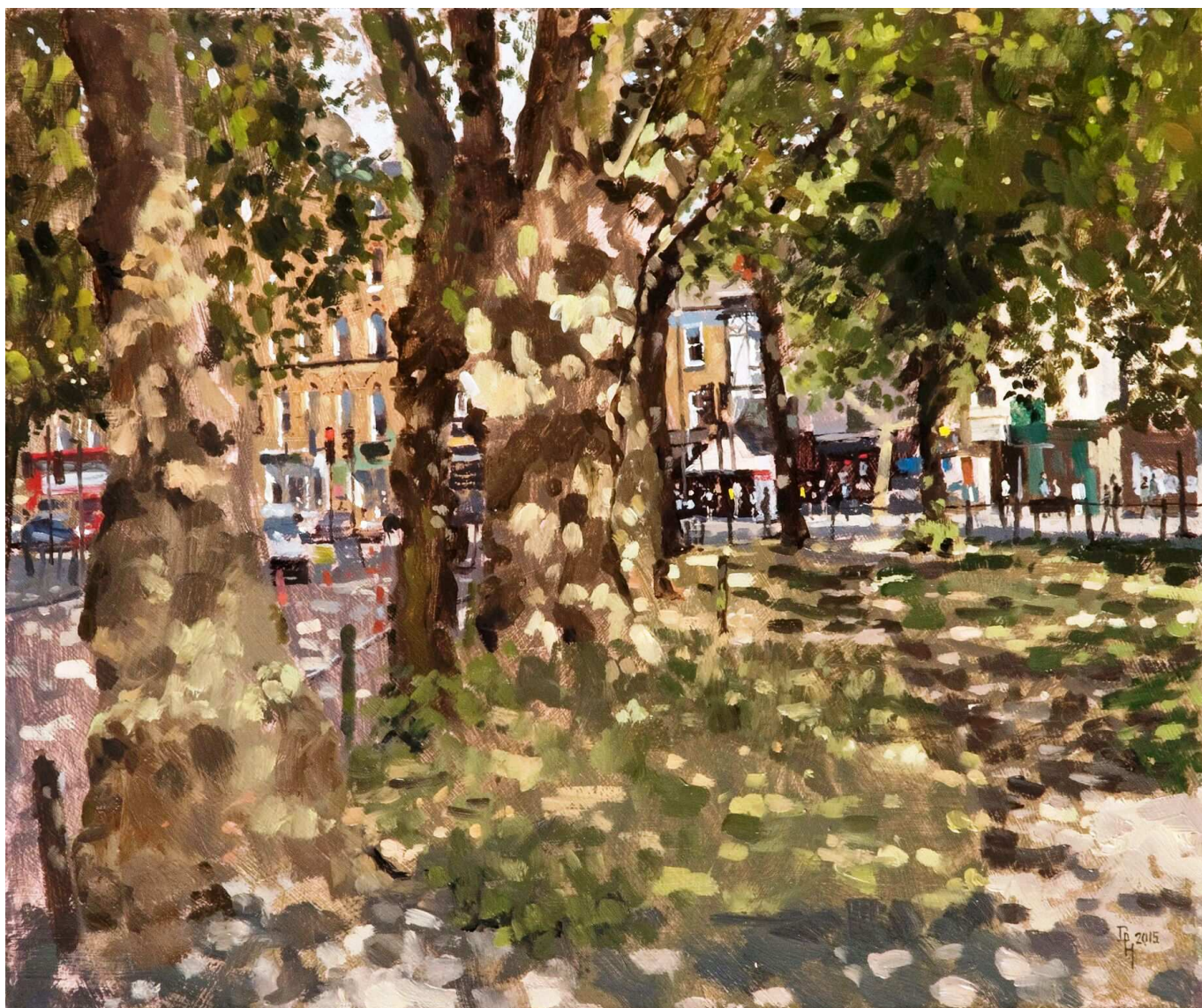
And that may be why he felt the need to initially buck the trend and opt for maths and physics at university.

A City quant

Achieving a PhD from Cambridge, Benjamin went to work as a 'quant' in the City of London, using his skills to build models of risk for a loan portfolio.

What may have been financially lucrative was creatively unfulfilling, and Benjamin knew he would return to the artistic fold as soon as he had accrued the resources to do so.





Opting for life of an artisan

In 2011, Benjamin's bank balance gave him the breathing space to give up the City and embark on life as an artisan - specialising in city and landscapes, still-life and portraits.

Within two years, his *Teacups in the Financial Times* had been selected for the Royal Academy Summer Exhibition - a pinnacle of artistic achievement.

Benjamin has also had work selected for annual shows by the Royal Institute of Oil Painters, the Royal Society of British Artists, the Royal Society of Portrait Painters, and the New English Art Club.

His portfolio of work depicting London street scenes and landscapes (some of which is shown here) offers a personal and evocative reflection on the Capital.

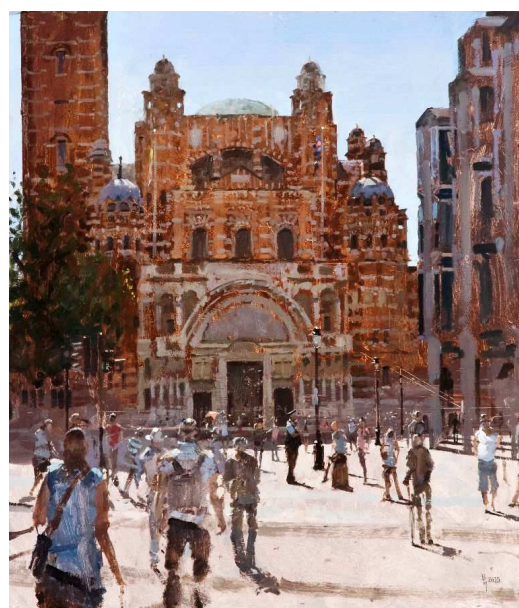
Hottinger Art

Benjamin Hope was the first featured artist for Hottinger Art, a venture launched by the private wealth management Hottinger Group, with a history of supporting the arts going back to the eighteenth century.

Hottinger Art will be supporting emerging British and Irish artists through acquisitions, promotion through its *Featured Artist* scheme, awards and funding of bursaries.

The Group will be working with partners in the art world, such as Mall Galleries and Heatherley's School of Fine Art, to identify and support artists such as Benjamin, who display huge potential in their work.

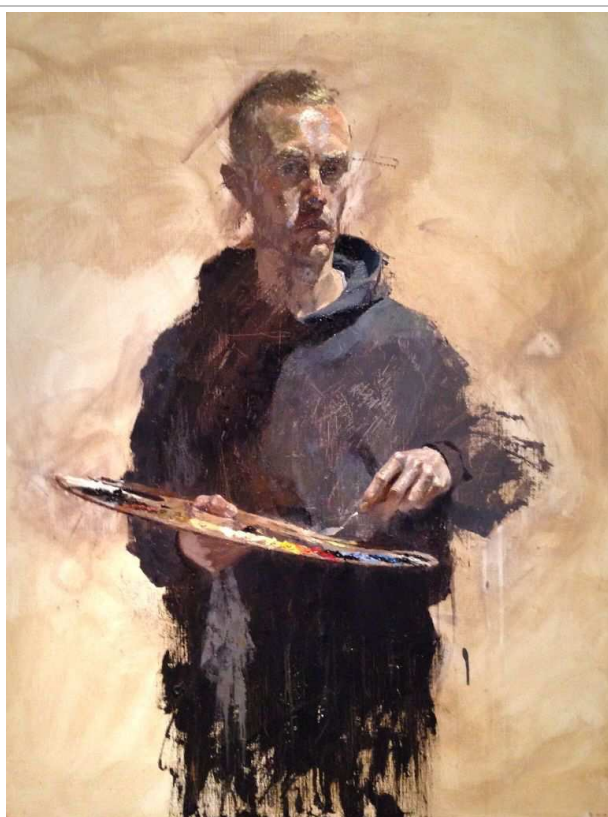
www.hottinger.co.uk



For information on London

www.visitlondon.com

A snapshot of Benjamin at work



Benjamin Hope : www.Benjaminjaminhope.net

AllWays traveller and the International Travel Writers Alliance



AllWays traveller is the consumer travel features 'arm' of the Alliance, providing independent travellers with views of the world from the professional travel journalists in the Alliance

www.allwaystraveller.com



The International Travel Writers Alliance is the world's largest association of professional travel journalists.

www.itwalliance.com



Ann Meador is a professional travel writer and photographer and Managing Editor of *AllWays traveller*



Ashley Gibbins is a professional travel writer and photographer and Managing Director of the International Travel Writers Alliance.